



### Dt 315



#### CIRCULAR DUCT FAN

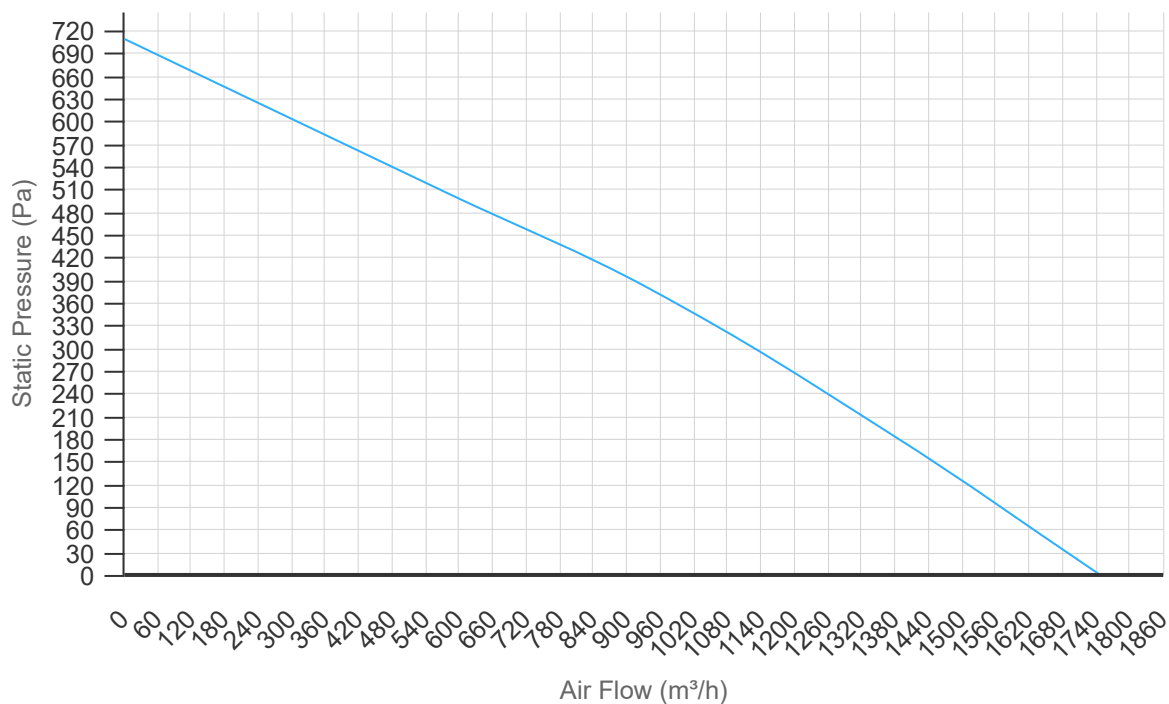
- Metal case
- Impeller ,backward curved blades
- Suitable for speed control
- Working temperature -25°C/+50°C

#### Working Conditions

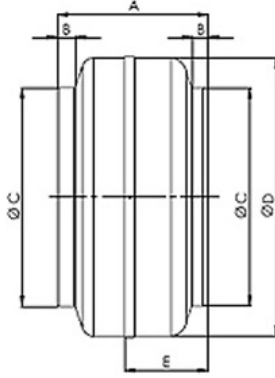
Working Conditions	Theoretical	Working Point	
Air Flow	0	1750.00	m <sup>3</sup> /h
Static Pressure	0	1.00	Pa
Dynamic Pressure		0.00	Pa
Total Pressure		0.00	Pa
Static / Total Efficiency		- / 0	%
Air Temperature / Density		20 / 1.20	C°
Altitude		0	m

#### Fan Properties

Fan Type	Radial	Fan Diameter / Size	313 mm
Heat Resistance	F40	Shaft Power	0 / 0 kW
Blade Material	Aluminum	Specific Fan Power	0.00 W/l/s
Fan Weight	6,9 kg	Air Output Speed	0.0 m/s
Blow position	Horizontal/Vertical	Fan Drive Modes	Directly Coupled



### Dimensions



A:285 mm

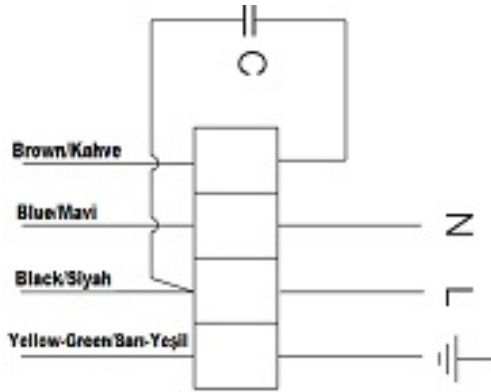
B:30 mm

ØC:313 mm

ØD:400 mm

E: 155 mm

### Motor Properties



Nominal Motor Power	0.18
Nominal Fan Speed	2500
No. of Poles	0
Nominal Motor Current	0.87
Voltage / Frequency / Phase	230
Protection Class	IP44
Insulation Class	B,F

### Acoustic Data

Distance (m)	3								
Reflecting Surface	Free surface								
Band	63 Hz	125 Hz	250 Hz	500 Hz	1000 Hz	2000 Hz	4000 Hz	8000 Hz	TOTAL
Lw dB(A)	62	67	71	69	68	69	63	57	76
Lp dB(A)	41	46	50	48	47	48	42	36	55

### Description

- All of the performance and technical data according to default configuration.
- All of the technical information is subject to change without notice.

### Certificates



### CVSAIR

Ördekçiöğlü Binası, Orta Mahalle Tevfik İleri Caddesi No:32/1 Pendik İstanbul

Tel : +90 (216) 417 12 48 sales@cvsair.com.tr / [www.cvsair.com.tr](http://www.cvsair.com.tr)

İKLİMSOFT FAN-SELECTOR Ver.3.1 / 24.01.2017 / [www.iklimsoft.com](http://www.iklimsoft.com)